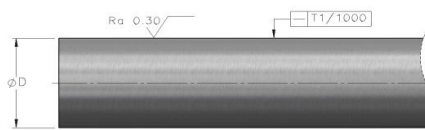
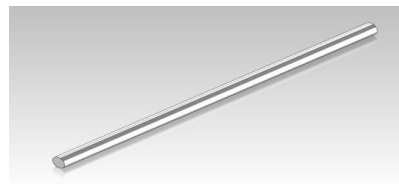


Precision Shaft

Type WV

Style: Precision hardened and ground, carbon steel w/ hard chrome plating

Material: Cf53, Ck55



Dia [mm]	Type	Weight [kg/m]	Length [mm]	Tolerance iso h7 [mm]	Hardness Depth min [mm]	Straightness T ₁ [mm/m]	Roundness [μm]
5	WV 5	0.16	3000	5.000 / 4.988	0.4	0.2	4
6	WV 6	0.23	6000	6.000 / 5.988	0.4	0.2	4
8	WV 8	0.40	6000	8.000 / 7.985	0.4	0.2	4
10	WV 10	0.62	6000	10.000 / 9.985	0.4	0.1	4
12	WV 12	0.89	6000	12.000 / 11.982	0.6	0.1	5
14	WV 14	1.21	6000	14.000 / 13.982	0.6	0.1	5
16	WV 16	1.58	6000	16.000 / 15.982	0.6	0.1	5
20	WV 20	2.47	6000	20.000 / 19.979	0.9	0.1	6
25	WV 25	3.85	6000	25.000 / 24.979	0.9	0.1	6
30	WV 30	5.55	6000	30.000 / 29.979	0.9	0.1	6
40	WV 40	9.87	6000	40.000 / 39.975	1.5	0.1	7
50	WV 50	15.40	6000	50.000 / 49.975	1.5	0.1	7

Chrome layer thickness: 10 ± 5μm

Chrome layer hardness: ≥ 800 HV

Surface hardness: 59-65 HRC

Length tolerance: +500 / -100 mm

Special tolerances and diameters are available upon request

Custom machining per customer drawing