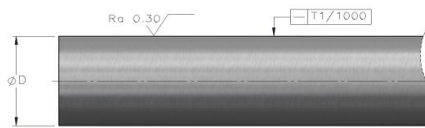
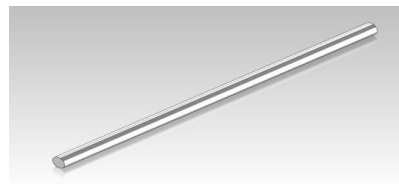


Precision Shaft

Type W

Style: Precision hardened and ground, carbon steel

Material: Cf53, Ck55



Dia [mm]	Type	Weight [kg/m]	Length [mm]	Tolerance iso h6 [mm]	Hardness Depth min [mm]	Straightness T ₁ [mm/m]	Roundness [μm]
5	W 5	0.16	3000	5.000 / 4.992	0.4	0.2	4
6	W 6	0.23	6000	6.000 / 5.992	0.4	0.2	4
8	W 8	0.40	6000	8.000 / 7.991	0.4	0.2	4
10	W 10	0.62	6000	10.000 / 9.991	0.4	0.1	4
12	W 12	0.89	6000	12.000 / 11.989	0.6	0.1	5
14	W 14	1.21	6000	14.000 / 13.989	0.6	0.1	5
16	W 16	1.58	6000	16.000 / 15.989	0.6	0.1	5
20	W 20	2.47	6000	20.000 / 19.987	0.9	0.1	6
25	W 25	3.85	6000	25.000 / 24.987	0.9	0.1	6
30	W 30	5.55	6000	30.000 / 29.987	0.9	0.1	6
40	W 40	9.87	6000	40.000 / 39.984	1.5	0.1	7
50	W 50	15.40	6000	50.000 / 49.984	1.5	0.1	7

Surface hardness: 59-65 HRC

Length tolerance: +500 / -100 mm

Special tolerances and diameters are available upon request

Custom machining per customer drawing